

FOR LEASE - RETAIL

2768 Laurier Street, Rockland, ON



DESCRIPTION:

- ✓ Rockland is a bilingual community located about 40 kilometres east of downtown Ottawa, part of the city of Clarence-Rockland, having a population of over 12,000 people.
- ✓ Place Laurier is an established, well located plaza with a captive audience servicing the community.
- ✓ Join Domino's Pizza, Tiny Hoppers, Pharmacy, Dentist. Close to Shoppers Drug Mart, Ultramar, Independent, Scotiabank, The Beer Store, McDonalds.

SPACE AVAILABLE:

- ✓ 600 S.F. (in-line) @ \$18.00 p.s.f. per annum net.
- ✓ 1,168 S.F. (end-cap) @ \$18.00 p.s.f. per annum net.

OPERATING COSTS:

- ✓ \$ 7.90 per square foot (estimate).

SIGNAGE:

- ✓ Good Storefront and potential Pylon signage.

PARKING AND ACCESS:

- ✓ Ample parking.
- ✓ Good Access and Egress with signalized intersection.



For more information please contact:

BRENT TAYLOR, Broker of Record / President
BRENTCOM REALTY CORPORATION, BROKERAGE
Tel: (613)726-7323
Fax: (613)721-8849
Email: brent@brentcomrealty.com
www.brentcomrealty.com

The information as herewith enclosed has been obtained from sources we believe to be reliable, but we make no representation or warranties, express or implied, as to the accuracy of the information. All references to age, square footage, income, expenses, data and other information contained herein are approximate and subject to change. Prospective purchasers or tenants shall not construe the information as legal or tax advice. Buyers or tenants should conduct their own independent investigations and rely only on those results. All properties subject to change or withdrawal without notice. E. & O. E.

FOR LEASE - RETAIL

2768 Laurier Street, Rockland, ON

BRENTCOM
REALTY CORPORATION, BROKERAGE
COMMERCIAL SALES • COMMERCIAL LEASING • CONSULTING



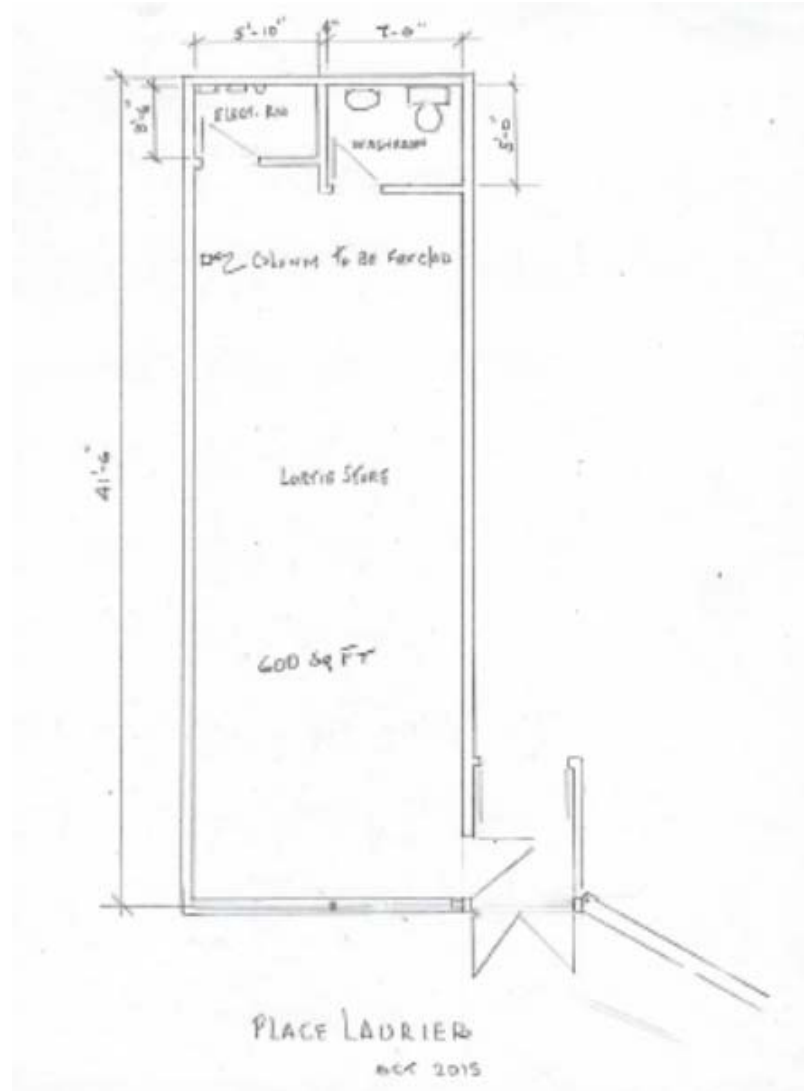
The information as herewith enclosed has been obtained from sources we believe to be reliable, but we make no representation or warranties, express or implied, as to the accuracy of the information. All references to age, square footage, income, expenses, data and other information contained herein are approximate and subject to change. Prospective purchasers or tenants shall not construe the information as legal or tax advice. Buyers or tenants should conduct their own independent investigations and rely only on those results. All properties subject to change or withdrawal without notice. E. & O. E.

FOR LEASE - RETAIL

2768 Laurier Street, Rockland, ON

BRENTCOM
REALTY CORPORATION, BROKERAGE
COMMERCIAL SALES • COMMERCIAL LEASING • CONSULTING

600 S.F.

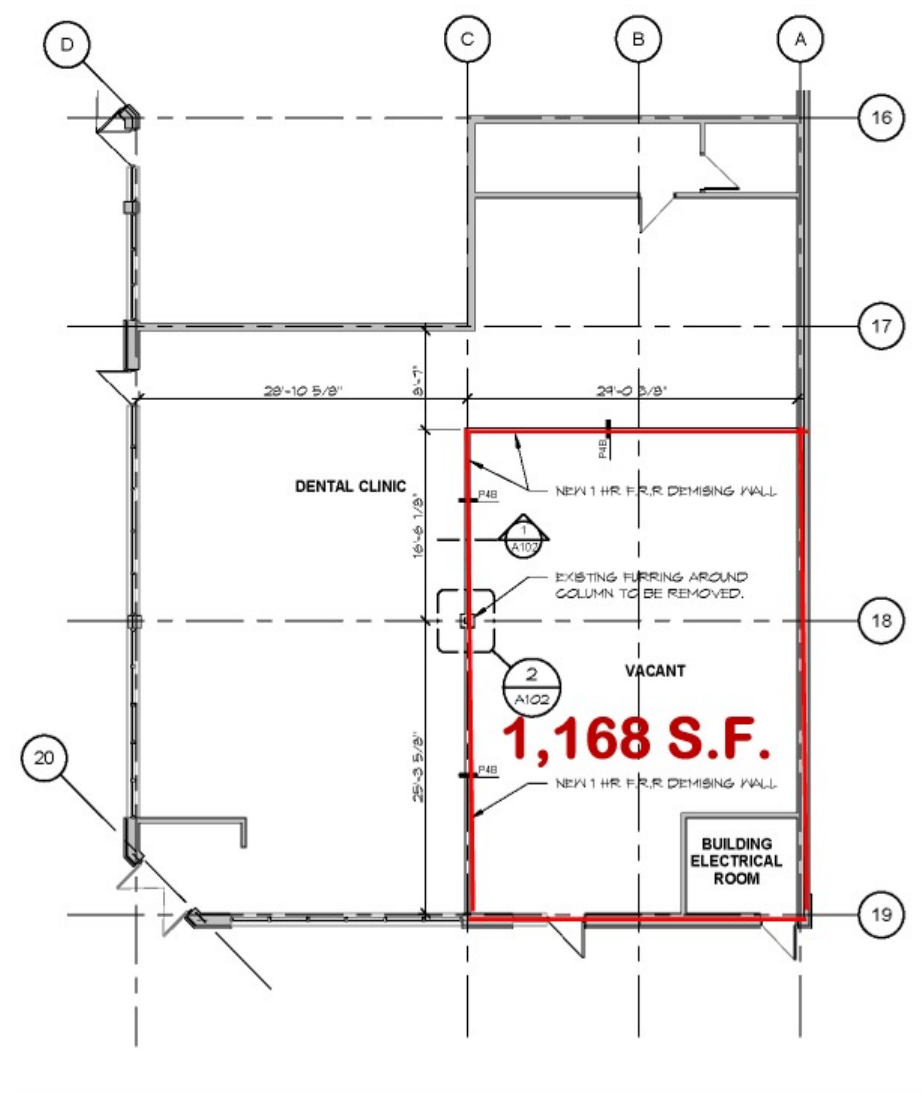


The information as herewith enclosed has been obtained from sources we believe to be reliable, but we make no representation or warranties, express or implied, as to the accuracy of the information. All references to age, square footage, income, expenses, data and other information contained herein are approximate and subject to change. Prospective purchasers or tenants shall not construe the information as legal or tax advice. Buyers or tenants should conduct their own independent investigations and rely only on those results. All properties subject to change or withdrawal without notice. E. & O. E.

FOR LEASE - RETAIL

2768 Laurier Street, Rockland, ON

BRENTCOM
REALTY CORPORATION, BROKERAGE
COMMERCIAL SALES • COMMERCIAL LEASING • CONSULTING



The information as herewith enclosed has been obtained from sources we believe to be reliable, but we make no representation or warranties, express or implied, as to the accuracy of the information. All references to age, square footage, income, expenses, data and other information contained herein are approximate and subject to change. Prospective purchasers or tenants shall not construe the information as legal or tax advice. Buyers or tenants should conduct their own independent investigations and rely only on those results. All properties subject to change or withdrawal without notice. E. & O. E.