

FOR LEASE: Office

Alta Bank Plaza, Ottawa, ON



2668 Alta Vista Drive, Ottawa

DESCRIPTION:

- ✓ **Alta Bank Plaza** is an established community shopping centre located at the corner of Alta Vista Drive and Bank Street. This busy neighbourhood centre services Alta Vista, South Keys, Walkley Road, Riverside Drive, Pleasant Park, Bank Street. High traffic location.
- ✓ Surrounded by residential neighbourhoods and amenities like Service Ontario which create a steady flow of traffic and attract a wide variety of customers to the plaza.
- ✓ Join new KFC, Scotiabank, Subway, Gabriel Pizza, Promed Pharmacy. Neighbouring tenants include Independent Grocer, Chez Cora, Pet Valu, Dollarama.

OFFICE SPACE AVAILABLE: 2nd Floor Walk-Up Space

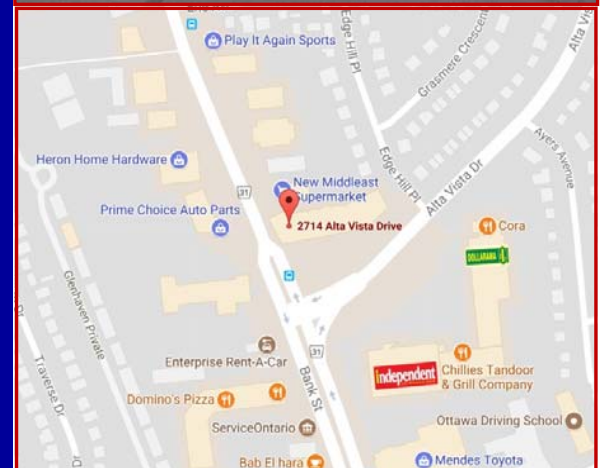
- ✓ Floor 02 the "Gross Leasable Area" = 6,299.44 square feet.

GROSS RENTAL RATE:

- ✓ \$ 20.00 per square foot gross per annum plus utilities.

SIGNAGE AND PARKING:

- ✓ Potential pylon signage.
- ✓ Ample free parking.



For more information please contact:

BRENT TAYLOR, Broker of Record / President
BRENTCOM REALTY CORPORATION, BROKERAGE
Tel: (613)726-7323 Fax: (613)721-8849
Email: brent@brentcomrealty.com
www.brentcomrealty.com

The information as herewith enclosed has been obtained from sources we believe to be reliable, but we make no representation or warranties, express or implied, as to the accuracy of the information. All references to age, square footage, income, expenses, data and other information contained herein are approximate and subject to change. Prospective purchasers or tenants shall not construe the information as legal or tax advice. Buyers or tenants should conduct their own independent investigations and rely only on those results. All properties subject to change or withdrawal without notice. E. & O. E.

FOR LEASE: Office Alta Bank Plaza, Ottawa, ON

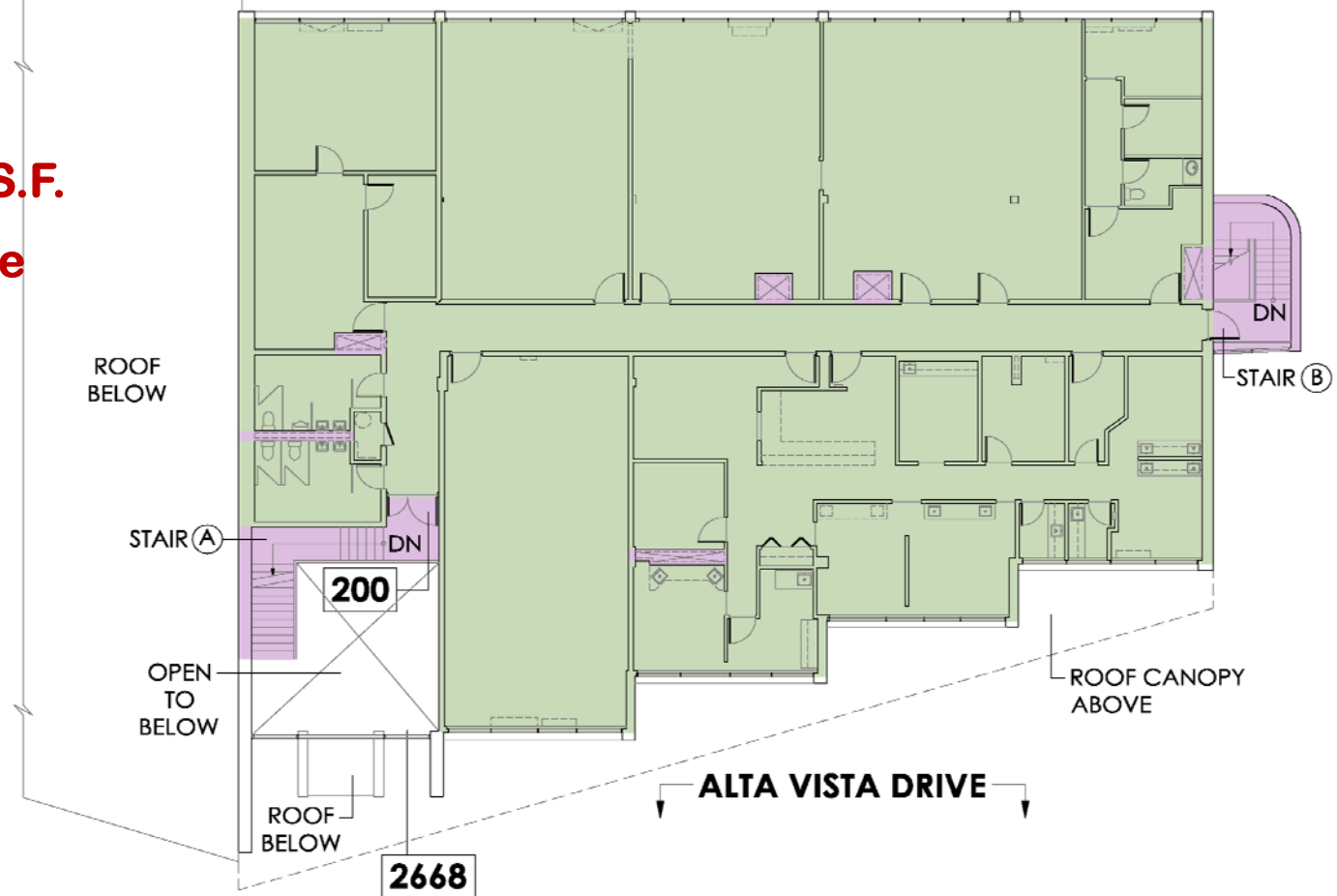
BRENTCOM
REALTY CORPORATION, BROKERAGE
COMMERCIAL SALES • COMMERCIAL LEASING • CONSULTING

SECOND FLOOR OFFICE

FLOOR 02

6,299.44 S.F.

Available



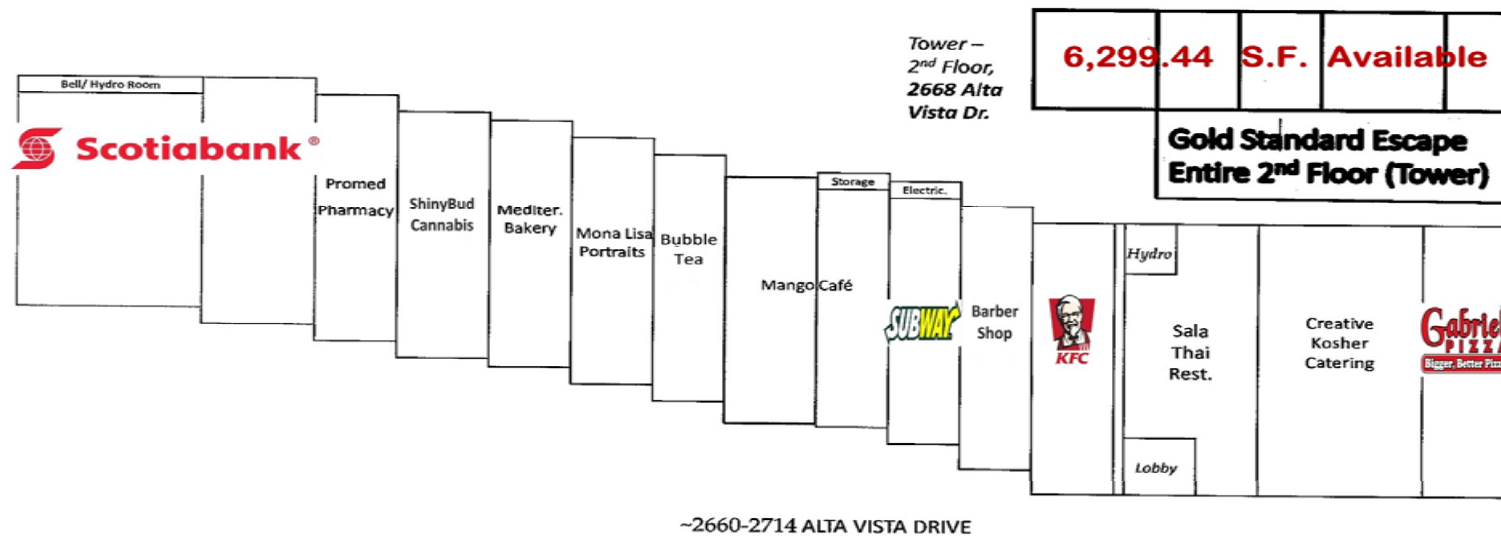
The information as herewith enclosed has been obtained from sources we believe to be reliable, but we make no representation or warranties, express or implied, as to the accuracy of the information. All references to age, square footage, income, expenses, data and other information contained herein are approximate and subject to change. Prospective purchasers or tenants shall not construe the information as legal or tax advice. Buyers or tenants should conduct their own independent investigations and rely only on those results. All properties subject to change or withdrawal without notice. E. & O. E.

FOR LEASE: Office Alta Bank Plaza, Ottawa, ON



SECOND FLOOR OFFICE

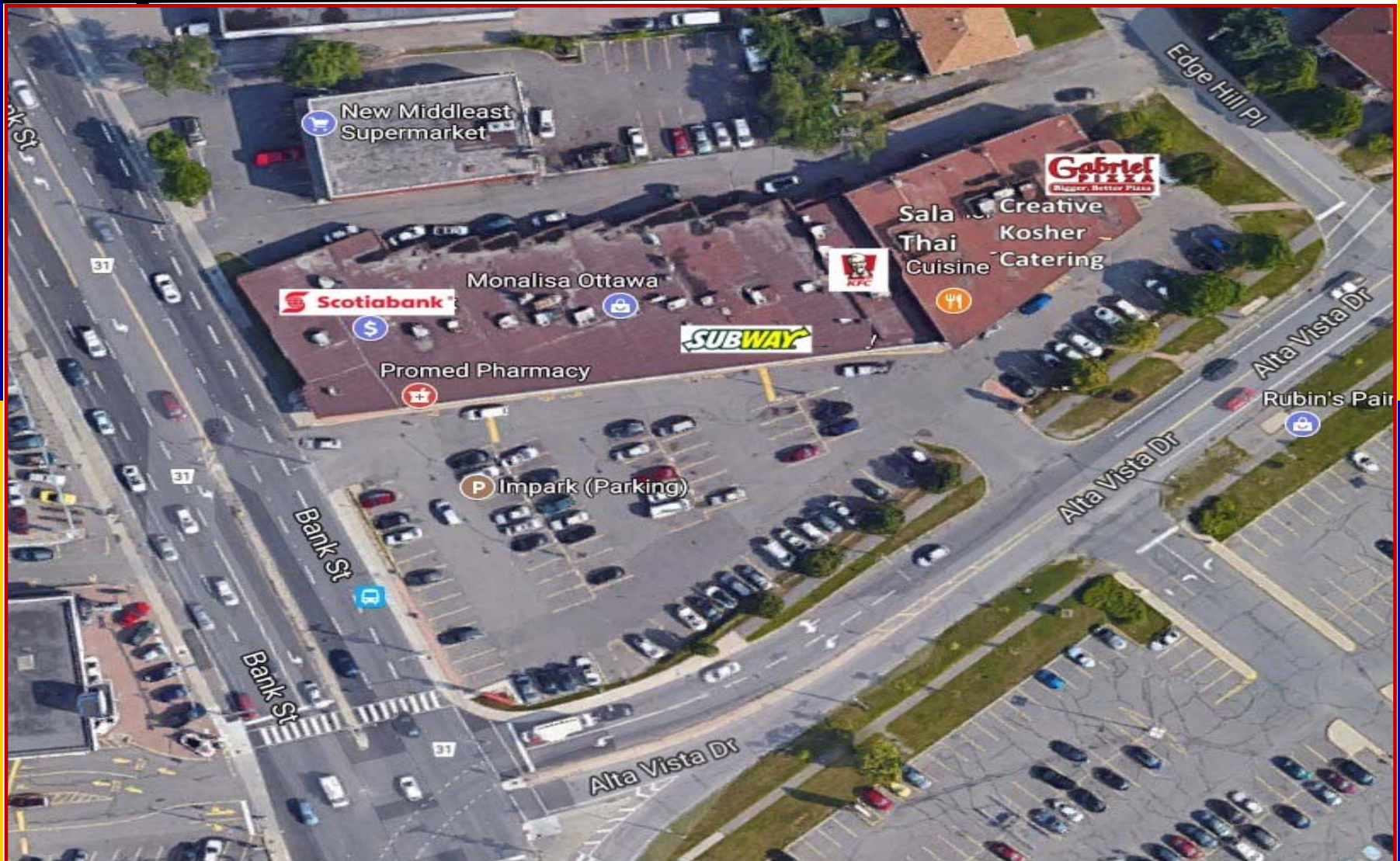
ALTA BANK SHOPPING PLAZA



The information as herewith enclosed has been obtained from sources we believe to be reliable, but we make no representation or warranties, express or implied, as to the accuracy of the information. All references to age, square footage, income, expenses, data and other information contained herein are approximate and subject to change. Prospective purchasers or tenants shall not construe the information as legal or tax advice. Buyers or tenants should conduct their own independent investigations and rely only on those results. All properties subject to change or withdrawal without notice. E. & O. E.

FOR LEASE: Office Alta Bank Plaza, Ottawa, ON

BRENTCOM
REALTY CORPORATION, BROKERAGE
COMMERCIAL SALES • COMMERCIAL LEASING • CONSULTING



The information as herewith enclosed has been obtained from sources we believe to be reliable, but we make no representation or warranties, express or implied, as to the accuracy of the information. All references to age, square footage, income, expenses, data and other information contained herein are approximate and subject to change. Prospective purchasers or tenants shall not construe the information as legal or tax advice. Buyers or tenants should conduct their own independent investigations and rely only on those results. All properties subject to change or withdrawal without notice. E. & O. E.